



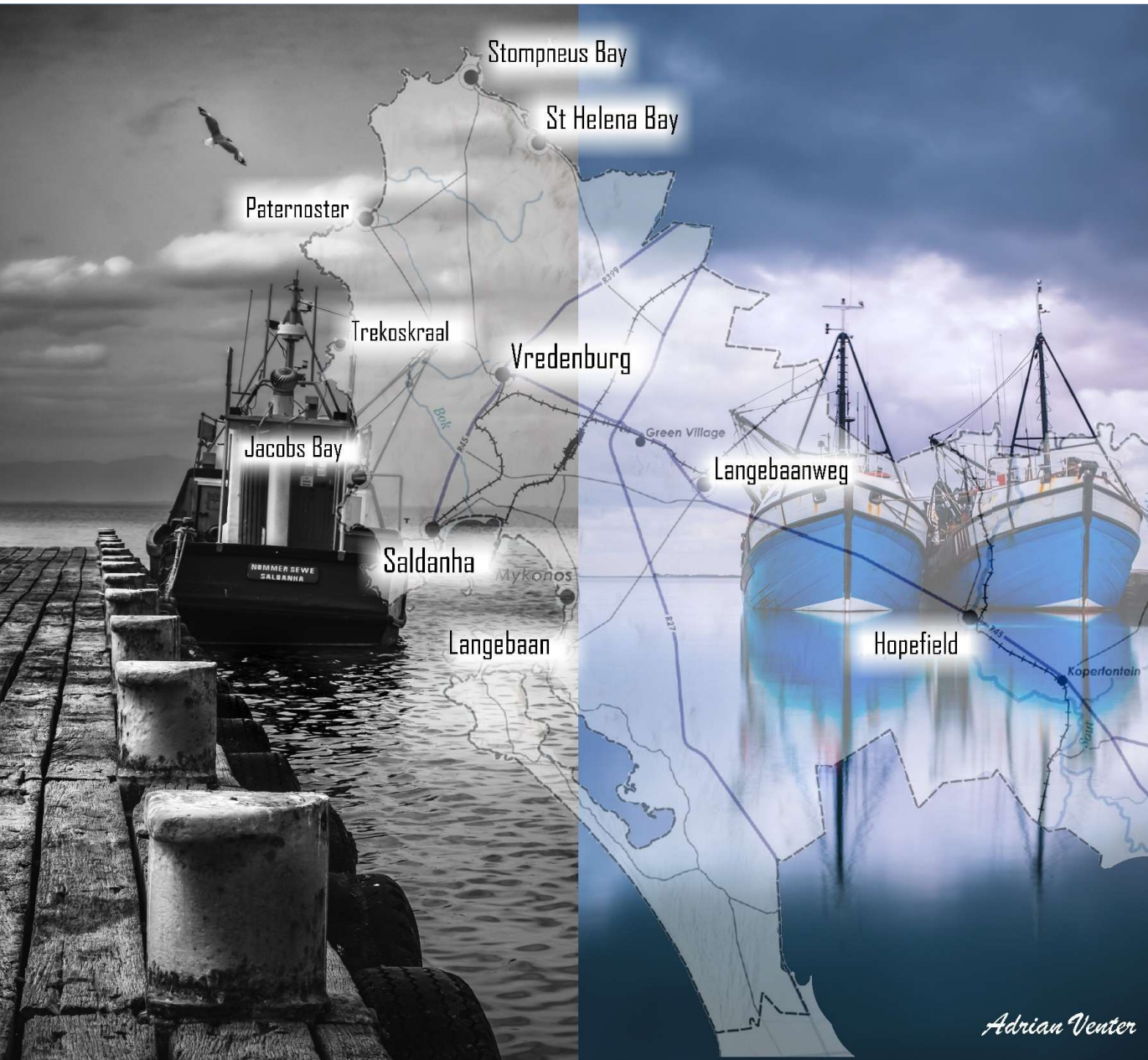
SALDANHA <sup>BAAI</sup>  
BAY  
MUNISIPALITEIT | MUNICIPALITY | uMASIPALA

[www.sbm.gov.za](http://www.sbm.gov.za)

# An overview of the Economic Growth Potential in the Saldanha Bay Municipal Area

24 October 2025

*City of Excellence and Opportunity on the “Weskus”*



*Adrian Venter*



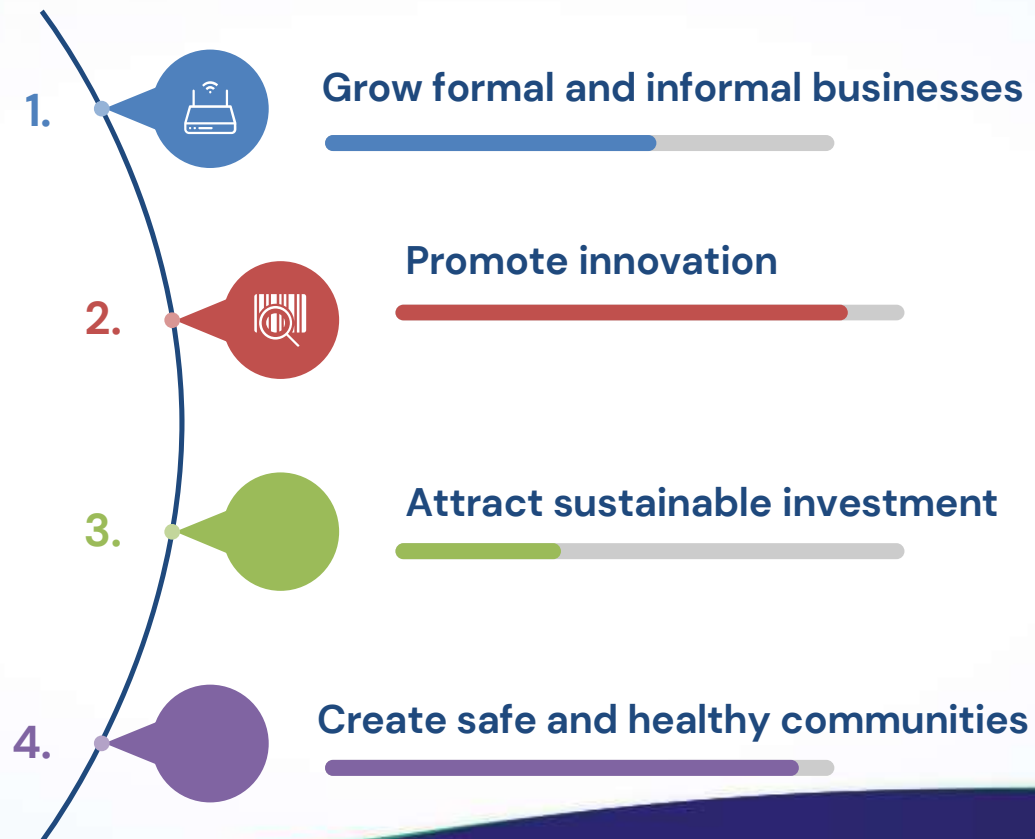
# Vision

**City of Excellence and  
Opportunity on the  
“Weskus”**

*ence and Opportunity on the “Weskus”*

# MISSION STATEMENT

Saldanha Bay is a people-centred municipality.  
It is here that citizens and the municipality work together to:



*City of Excellence and Opportunity on the "Weskus"*

# GUIDING PRINCIPLES

**RESPONSIVE, EFFICIENT & EFFECTIVE**

**ETHICAL, ACCOUNTABLE AND TRANSPARENT**

**COMPETENT WITH A LONG TERM VIEW**

**INNOVATIVE & OPEN TO CHANGE**

**HUMAN RIGHTS, CULTURAL DIVERSITY & SOCIAL  
COHESION**

**COMMUNITY FIRST**

# STRATEGIC FOCUS AREAS

COMMUNITY  
COLLABORATION

ECONOMY

FINANCIAL  
&  
INSTITUTIONAL  
VIABILITY

INNOVATION

SAFETY

SERVICES

# STRATEGIC OBJECTIVES



**1. Foster community development through upliftment, integration, empowerment & communication.**

**2. Build a diversified economy through investment, growing current & new businesses and enabling the creation of sustainable jobs.**

**3. Provide cost effective services with financial and institutional sustainability.**

**4. Promote innovation and modern technology to enhance service delivery and increase opportunities.**

**5. Implement interventions to deliver community safety, through harnessing and intensifying collaboration with mandated sectors to ensure a safe and flourishing environment.**

**6. Provide reliable and affordable enhanced basic services and bulk services as part of the economic enabling infrastructure.**

*City of Excellence and Opportunity on the "Weskus"*

# Saldanha Bay Municipal Area

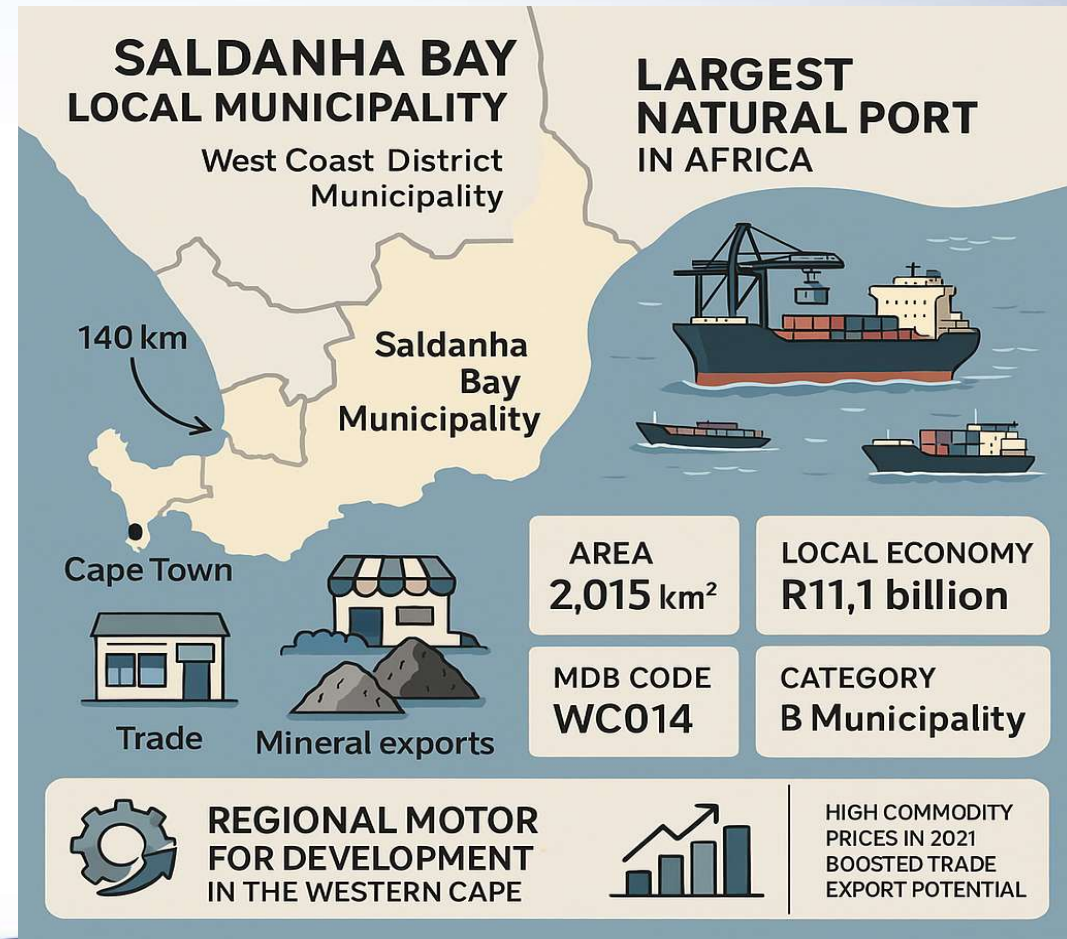


**5 out of 7  
Towns  
Coastal Towns**

*City of Excellence and Opportunity on the "Weskus"*

# Introduction to Saldanha Bay

- Saldanha Bay Local Municipality part of the West Coast District Municipality
- MDB Code: WC014
- Category B Municipality
- Area: 2 015 km<sup>2</sup>
- Local economy of SBM is valued at R 11.1 billion
- Approximately 140 kilometers north of Cape town
- Saldanha as the largest natural port in Africa and the area is earmarked as a regional motor for the development of the Western Cape Province.
- The municipality is likely to benefit from the growth in trade and exports due to the high commodity prices seen in 2021.



**SALDANHA BAY LOCAL MUNICIPALITY**  
West Coast District Municipality

**LARGEST NATURAL PORT IN AFRICA**

140 km

Cape Town

Trade Mineral exports

AREA <b>2,015 km<sup>2</sup></b>	LOCAL ECONOMY <b>R11,1 billion</b>
MDB CODE <b>WC014</b>	CATEGORY <b>B Municipality</b>

**REGIONAL MOTOR FOR DEVELOPMENT IN THE WESTERN CAPE**

HIGH COMMODITY PRICES IN 2021  
BOOSTED TRADE EXPORT POTENTIAL

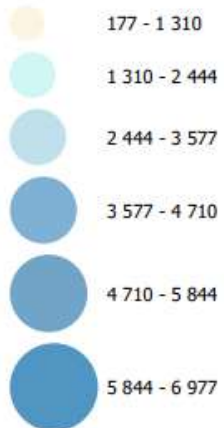
*City of Excellence and Opportunity on the "Weskus"*

# Economic Indicators for SBM

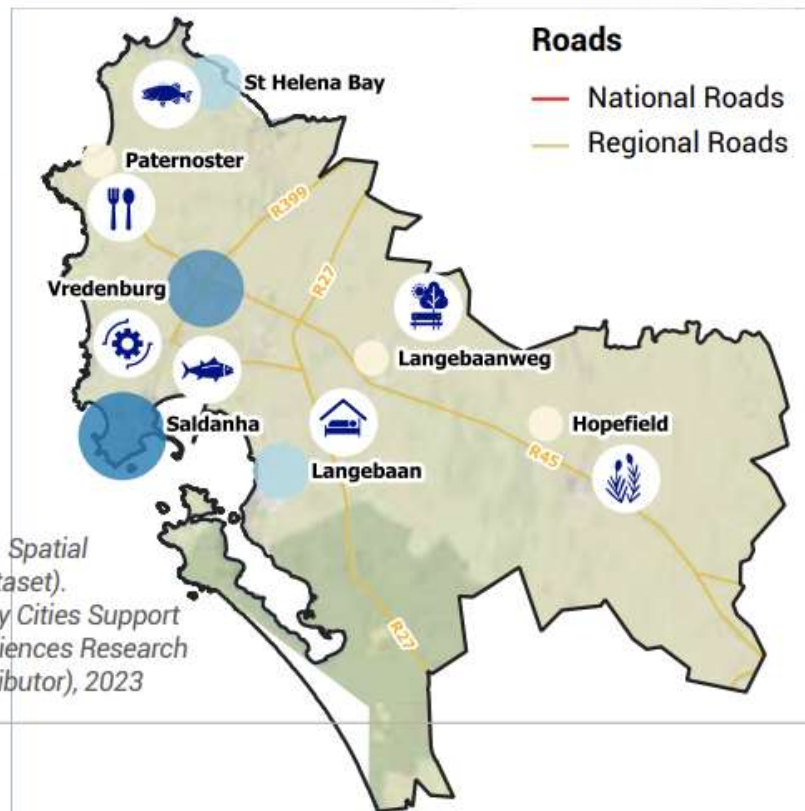
Map 3.4

## NUMBER OF FTE JOBS PER TOWN AND MAIN SECTOR, Saldanha Bay, 2022

### FTE numbers



Source: Nell, A. & Visagie, J. Spatial Tax Panel 2014 – 2022 (dataset).  
Version 3. National Treasury Cities Support Programme and Human Sciences Research Council (producer and distributor), 2023



### Main sector for employment

- Growing of other perennial crops
- Short-term accommodation activities
- Botanical and zoological gardens and nature reserves activities
- Restaurants and mobile food service activities
- Marine fishing
- Freshwater fishing
- General public administration at Provincial Government level

# Economic Indicators for SBM

## Demographics

Population Estimates, 2024 (MYPE); Household estimates, 2024 (MYPE)



Population  
**130 530**

(Source: MYPE)



Households  
**40 872**

(Source: MYPE)

## Education

2023



Matric Pass Rate **80.4%**  
Learner Retention Rate **75.8%**  
Learner-Teacher Ratio **30.4**

## Poverty

2023



Gini Coefficient **0.59**  
Poverty Head Count Ratio (UBPL) **73.7%**

## Health

2023/24



Primary Health Care Facilities  
**8**  
(excl. mobile/satellite clinics)

Immunisation Rate  
**40.8%**

Maternal Mortality Ratio  
(per 100 000 live births)  
**0.0**

Teenage Pregnancies –  
Delivery rate to women  
U/19  
**13.9%**

# Economic Indicators for SBM

## Largest 3 Sectors

## Contribution to GDP, 2023

Finance, insurance, real estate  
and business services

**21.0%**



Agriculture, forestry and fishing

**20.0%**



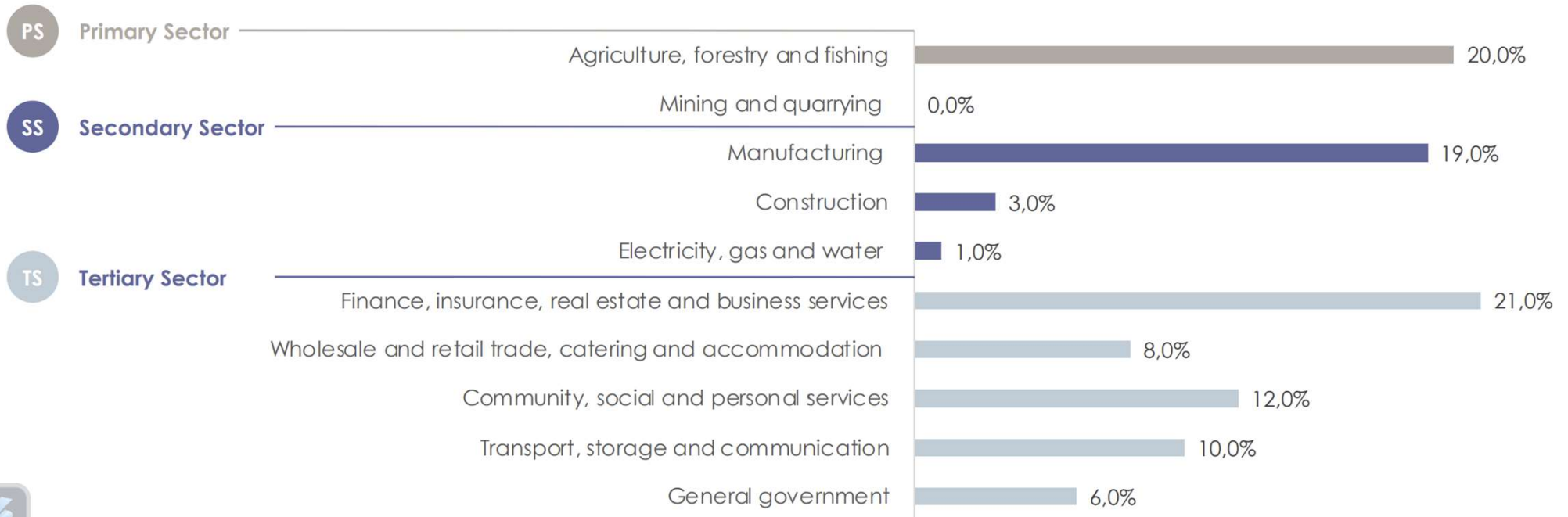
Manufacturing

**19.0%**



# Stats for SBM Area

Figure 25  
GDPR SECTORAL CONTRIBUTIONS IN CONSTANT 2015 PRICES, Saldanha Bay, 2023

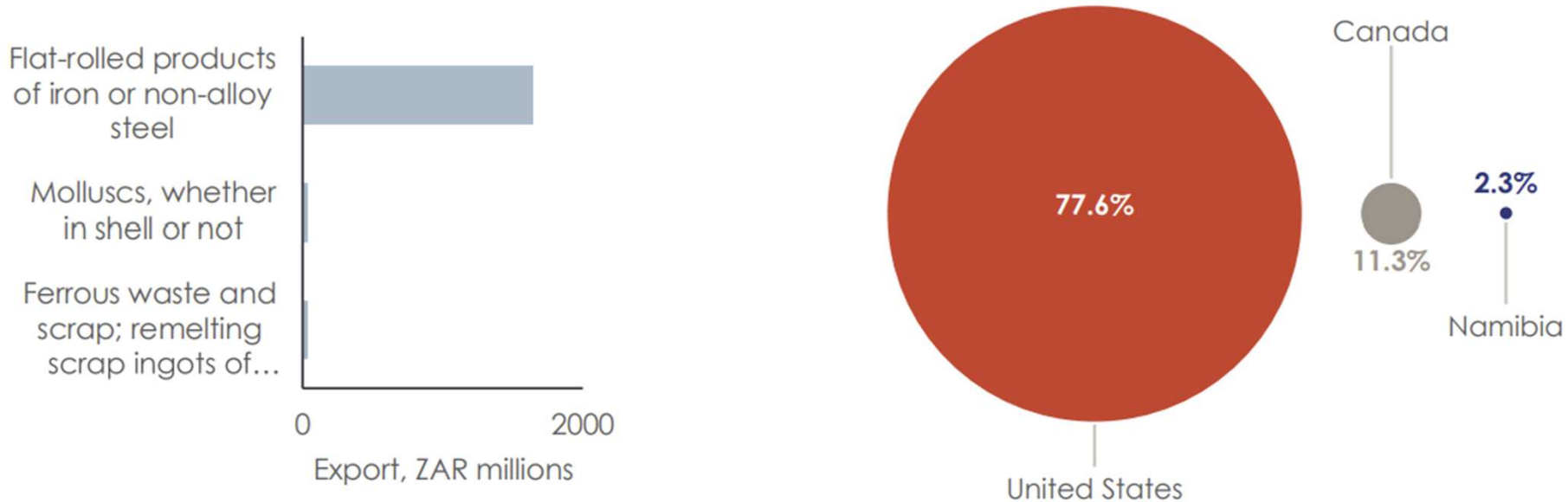


Source: Quantec, 2024

# Stats for SBM Area - Exports

**Figure 60**

**TOP 3 EXPORT PRODUCTS AND TOP 3 EXPORT PARTNERS, Saldanha Bay, 2023**

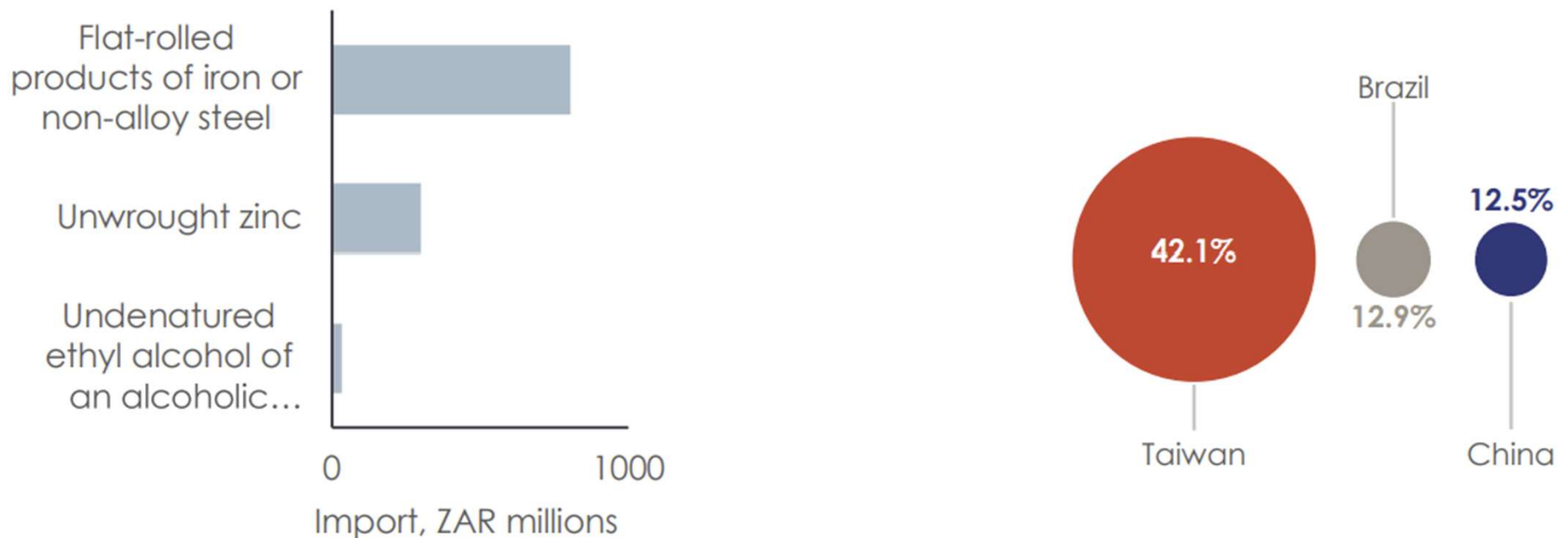


Source: Quantec, 2024

# Stats for SBM Area – Imports

Figure 61

TOP 3 IMPORT PRODUCTS AND TOP 3 IMPORT PARTNERS, Saldanha Bay, 2023



Source: Quantec, 2024

# Economic Potential & Strategic Sectors

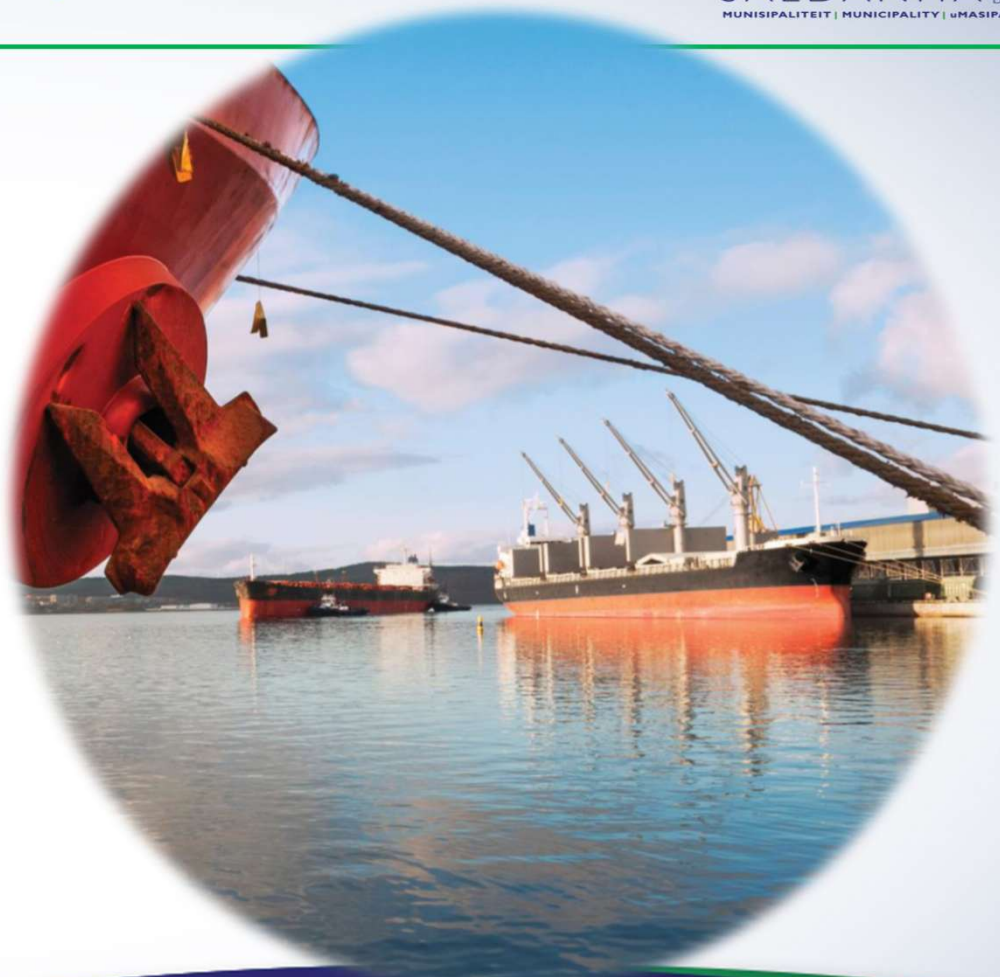


- **Green Hydrogen & Renewable Energy Hub:** Positioned at the forefront of South Africa's green energy transition, Saldanha Bay is earmarked as a key node in the green hydrogen economy, offering vast opportunities for clean energy investment, manufacturing, and exports—especially to energy-hungry nations like India.
- **Solar farming expansion:** The rapid expansion of solar farms in the Saldanha Bay Municipal area presents a prime opportunity for investors to tap into a growing renewable energy sector, supported by abundant natural resources, municipal backing, and rising demand for sustainable energy solutions
- **Special Economic Zone (SEZ):** Freeport Saldanha (IDZ) offers tax incentives, streamlined customs processes, and robust support infrastructure tailored for oil, gas, maritime, and energy industries.
- **Proximity to Global Trade Routes:** A deep-water port with direct access to major shipping lanes, ideal for export-oriented industries and logistics.
- **Municipal owned air strip** – potential for development into commercial/cargo airport
- **Maritime & Port Services:** Hub for ore exports, ship repair, oil & gas logistics — a pivotal maritime support centre.
- **Industrial & Manufacturing:** Steel (formerly Saldanha Steel), vessel fabrication, corrosion protection services, and other value-added industrial services.
- **Energy & Renewables:** Key potential for renewable energy manufacturing, oil and gas supply bases, and offshore services.
- **Fishing & Aquaculture:** Established sector with coastal towns like Paternoster and St. Helena Bay; growing focus on small-scale fishers and sustainable practices.
- **Tourism & Conservation:** Rich in natural beauty, fynbos, national parks (e.g. San Parks), lagoons, whale migration, cultural and heritage towns (e.g., Paternoster, Langebaan).
- **Mining:** Mining represents a key pillar of economic activity in the Saldanha Bay Municipal area, offering diverse investment opportunities across mineral extraction, beneficiation, and supporting services within a resource-rich and strategically located region.



# Port Infrastructure & Capacity

Cargo Type	Terminal	Usable Berths	Terminal Capacity (mtpa)	Berth Draught	Berth Length
Iron Ore	Iron Ore Terminal	2	60 million	23 m	1,250 m
Break-Bulk	Multi-Purpose	4	8 million	13-15 m	874 m
Liquid Bulk	Liquid Bulk Terminal	1	25 million	23 m	350 m
Tug Operations	Small Craft Harbour	5	-	5.5 m	225 m
Fabrication Site	Mossgas	1	-	6 m	35 m



*City of Excellence and Opportunity on the "Weskus"*

# Saldanha Port & strategic advantages

**MARITIME & PORT SERVICES**  
**Transnet National Ports Authority (TNPA) – Port of Saldanha**

The Port of Saldanha is not just a vital mineral export hub; it is evolving into a multi-sector gateway connecting Africa’s natural resources and industrial capabilities to global markets. With robust infrastructure, growing cargo volumes, and significant investment opportunities, Saldanha offers **investors a strategic platform** for long-term growth in mining, energy, and logistics.



- The Port of Saldanha is the **largest and deepest natural port in the Southern Hemisphere**, capable of accommodating vessels with draughts of up to **21.5 meters**.
- Its strategic location on South Africa’s west coast and unique infrastructure – including a **purpose-built rail link** directly connected to a **jetty bulk loading facility** – makes it a critical hub for the export of **iron ore, crude oil, and break-bulk cargoes**.
- The port’s liquid bulk terminal can accommodate **Very Large Crude Carriers (VLCCs)**, while the multi-purpose terminal efficiently handles diverse break-bulk cargo.
- Saldanha plays a vital role in supporting offshore oil and gas operations, with recent developments including a planned **oil and gas service complex** equipped for **rig repair and maintenance**, aligning with upstream exploration activities across **West and East Africa**.



# Saldehco – Saldanha Offshore Support Base (SOSB)

**Overview:**  
Saldehco (Pty) Ltd won a concession from Transnet National Ports Authority to develop and operate the Saldanha Offshore Support Base (SOSB), the first dedicated privately-operated offshore supply base at South Africa's deepest natural port.

**Key Offerings:**  
Core infrastructure includes quayside operations for loading and unloading, pipe storage and coating, marine fuel and lube facilities, blending services, and fabrication capabilities.

- Operational scope caters to vessels supporting offshore oil & gas and marine industries, offering warehousing, workshops, cranes, fuel provisioning, fresh water, and fabrication services.
- **Opportunities & Strategic Role:**
- SOSB positions Saldanha Bay as a key oil & gas services hub, offering one-stop support for offshore exploration, production, and maritime operations.
- It enhances regional economic competitiveness, lowering operational costs for clients and enabling growth of SMEs in the ocean economy.
- The base is integral to positioning Saldanha Bay as a logistical and industrial center for offshore energy activities.



# Aquaculture Development Zone (ADZ)

- The mussels sector recorded a total production of 3,420 ton, 3,261 tons and 2, 546 tons in 2021, 2022 and 2023, respectively
- The market for mussels is mainly local, however South Africa exported approximately 179.58 tons of mussels in 2023, with a total value of ZAR 13 216 426 million (USD 736 551).
- Key market destinations are the United State, accounting for 70% of the exports, followed by Namibia with 19%, Singapore with 6%, Mozambique with 3%, and Mauritius with 2%.
- **The market for mussels is mainly local, however South Africa exported approximately 179.58 tons of mussels in 2023, with a total value of ZAR 13 216 426 million (USD 736 551). Key market destinations are the United State, accounting for 70% of the exports, followed by Namibia with 19%, Singapore with 6%, Mozambique with 3%, and Mauritius with 2%**

Information sourced DFFE

# Upcoming Infrastructure Revitalization

- **Small Harbours Revamp:** Master plan underway to revitalize Saldanha and St. Helena Bay harbours with investments (~R501 million) to bolster fishing, tourism, and local economies. Sea Harvest's R72 million infrastructure upgrade is underway.
- **Saldanha Port expansion:** The ongoing expansion of the Port of Saldanha is strategically positioned to meet the growing global demand for iron ore and other bulk commodities, creating significant opportunities for investment in logistics, export infrastructure, and value-added services within the region.

- **Port & Rail Connectivity:** Integrated port, rail, and road infrastructure connecting investors to regional and global markets.
- **Utilities & Digital Connectivity:** Reliable electricity, water, and fibre-optic networks support modern business needs.
- **Smart City initiative:** Guided by its Integrated Development Plan (IDP), Saldanha Bay Municipality is embracing a forward-thinking Smart City vision—leveraging digital infrastructure, data-driven planning, and innovation to drive inclusive growth and service delivery
- **Fibre project:** The Saldanha Bay Municipality has initiated a high-capacity fibre infrastructure project aimed at enhancing digital connectivity across the region, laying the foundation for a competitive digital economy, supporting business innovation, and enabling Smart City integration.
- **Road network:** Recent upgrades to the road network across the Saldanha Bay Municipal area have significantly improved regional connectivity, logistics efficiency, and access to key economic zones, enhancing the area's appeal for investors and developers



# Saldanha Freeport



- Saldanha Freeport is **South Africa's first Special Economic Zone (SEZ)** with a port, strategically located within the **deep-water Port of Saldanha Bay**, just **60 nautical miles from Cape Town**. It offers **seamless multimodal logistics access** – via sea, road, rail, and air – and is **gazetted as a Customs-Controlled Area (CCA)**, enabling qualifying investors to benefit from **SEZ and Freeport tax and VAT incentives**.
- **Sector Focus: Maritime & Energy**
- Saldanha Freeport is purpose-built for two high-growth sectors:
  - Marine Sector
    - Marine services hub & offshore supply base
    - Boat building, repair & decommissioning
    - Strategic marine services jetty (R3.3 billion est.)
  - **Energy Sector**
    - Green hydrogen production and export infrastructure
    - Bulk fuel storage and energy services
    - Integrated logistics and manufacturing hub
    - Dedicated grid and desalination infrastructure (under development)



# Saldanha Freeport



- Saldanha Freeport: Strategic Gateway for Investment
- Saldanha Freeport is South Africa's first Special Economic Zone (SEZ) located within a deep-water port and designated as a Customs Controlled Area (CCA). It offers a unique platform for global investors seeking access to maritime infrastructure, green energy development, streamlined trade facilitation and global trade connectivity.
- **Key Advantages**
- Strategic Location & Multimodal Access
  - Located just 60 nautical miles from Cape Town, Saldanha Freeport offers seamless access to sea, road, rail, and air logistics. It is one of the deepest natural ports in the Southern Hemisphere, capable of handling Capesize vessels and Very Large Crude Carriers (VLCCs), making it ideal for bulk exports and offshore energy operations.
- **SEZ & CCA Incentives**
  - Corporate Tax Rate: Reduced to 15% for qualifying businesses.
  - VAT & Duty Suspension: Zero VAT on goods and services supplied within the CCA; zero import duties from SACU member countries.
  - Accelerated Depreciation: 10% per annum on new and unused buildings.
  - Customs Efficiency: Fast-tracked clearance, inspection, and documentation processes under SARS oversight.
  - One-Stop-Shop Support: Dedicated investor services for permitting, infrastructure, and aftercare.
- **Infrastructure Readiness**
  - 356 ha of Serviced Industrial Land: Secure, ready-to-develop plots with utilities and transport access.
  - 20 ha Available for Long-Term Lease: Up to 99-year lease options for strategic investors.
  - Tailor-Made Facilities: Warehousing, fabrication yards, laydown areas, and modular office space.
  - Marine Services Jetty: R3.3 billion investment underway to support offshore supply base operations.
  - Desalination & Grid Infrastructure: Projects in development to support industrial water and energy needs.



*City of Excellence and Opportunity on the "Weskus"*

# Smart City & Fibre Infrastructure Vision for Saldanha Bay Municipality



## Strategic Intent

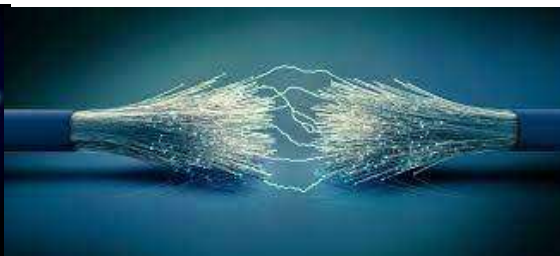
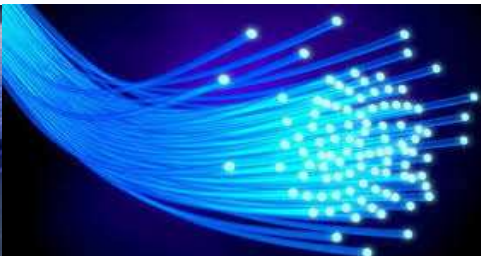
Saldanha Bay Municipality (SBM) is pioneering a transformative Smart City initiative aimed at creating a digitally connected, resilient, and inclusive urban environment. This vision is anchored in the deployment of a future-proof Open Access Network and the integration of smart technologies across municipal services.

## Smart City Components

- Smart Energy & Utilities: Intelligent metering and infrastructure management.
- Smart Mobility & Safety: Traffic systems, CCTV, and public safety enhancements.
- Smart Governance & Citizen Engagement: Mobile applications and web platforms for service access and feedback.
- Smart Education & Health: Digital platforms to support learning and healthcare delivery.

## Benefits & Sustainability

- The Smart City initiative is designed to:
- Enhance Service Delivery: Real-time data enables proactive management and responsiveness.
- Promote Economic Development: Digital infrastructure supports innovation, entrepreneurship, and job creation.
- Ensure Environmental Sustainability: Efficient resource use and reduced infrastructure impact.
- Foster Inclusivity: Equitable access to services and opportunities for all communities



# Project success:

- Fibre Project

## Total Metres Trenched in towns

- Langebaan (70 267 m)
- Saldanha Bay (72 261 m)
- Vredenburg (124 081 m)
- Hopefield (25 704 m)
- Jacobsbaai (12 276 m)
- Paternoster (18 956 m)
- St Helena Bay (132 973 m)
- Middelpoort (6467m)
- **TOTAL: 464 520 m**

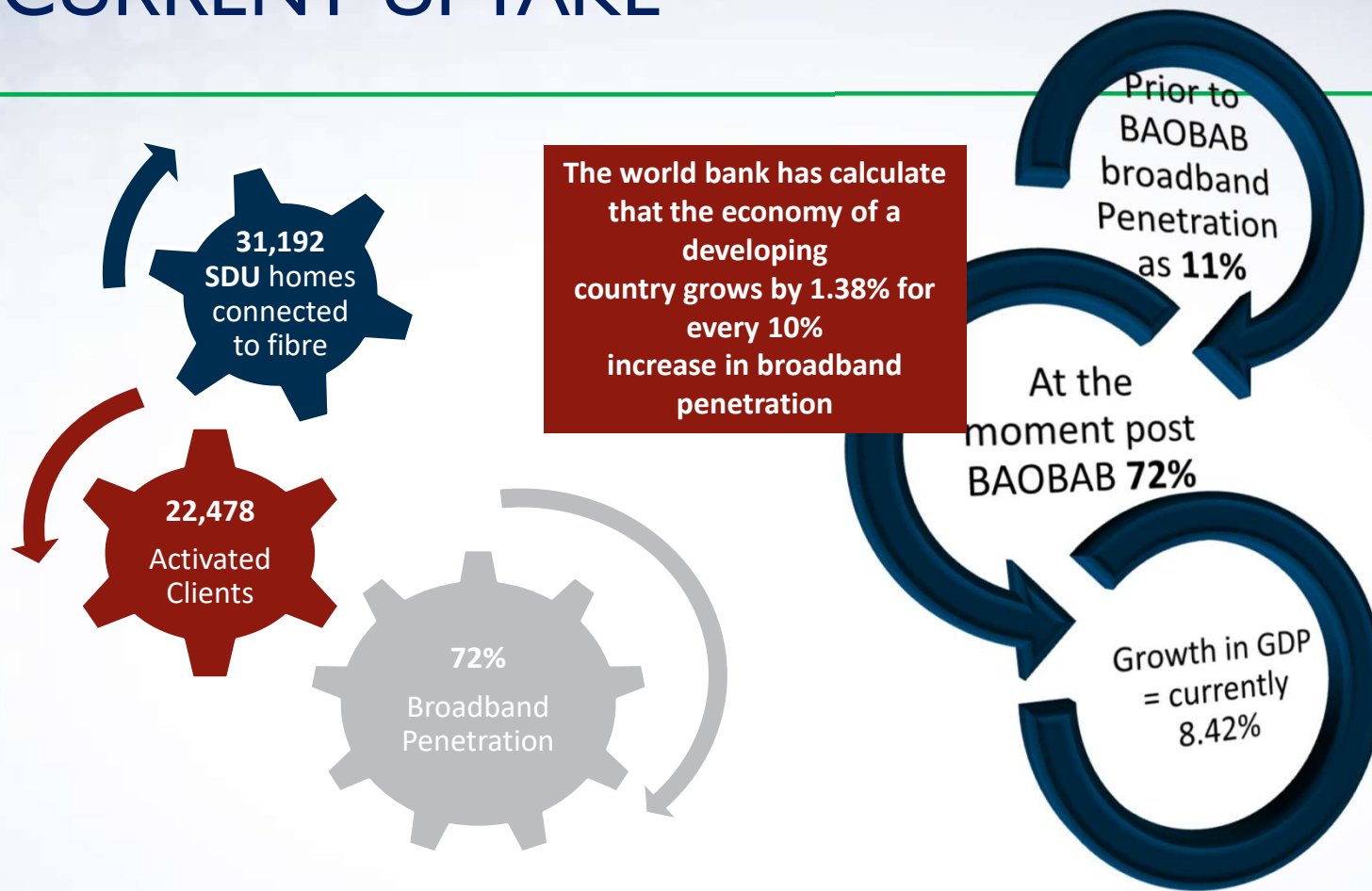
## Total Metres Trenched BACKHAUL

- **186 034 m**
- Town of Ongegund currently under construction

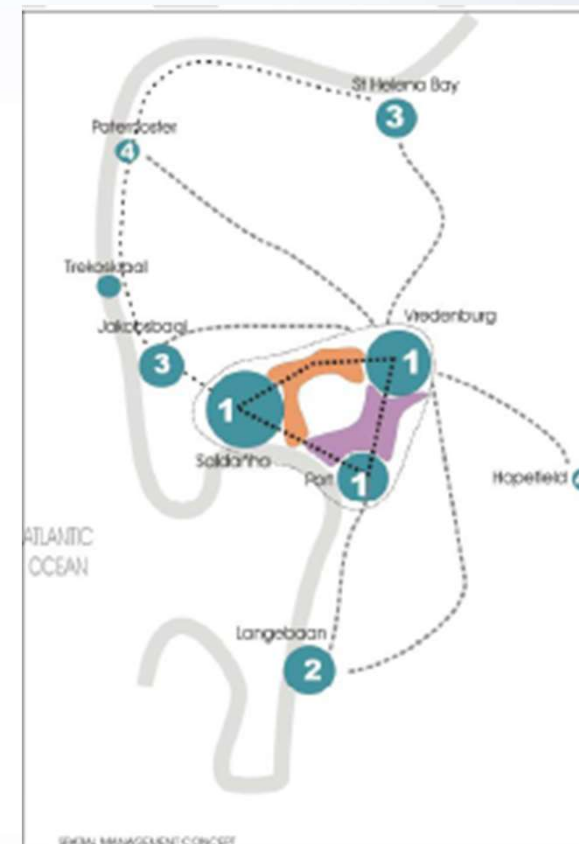
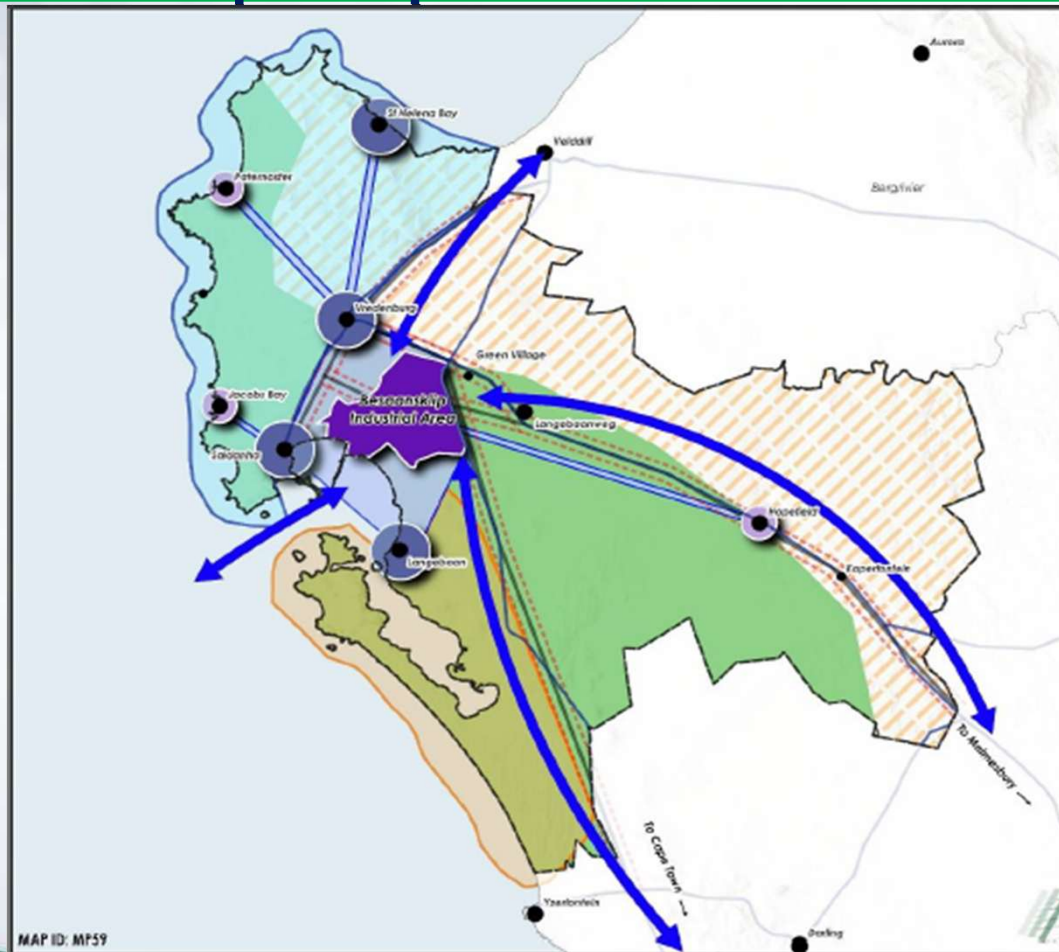
## Forecasted timeline vs delivered

- Total meter = 650,554m = **650km**
- Network completed within 12 months record time

# CURRENT UPTAKE

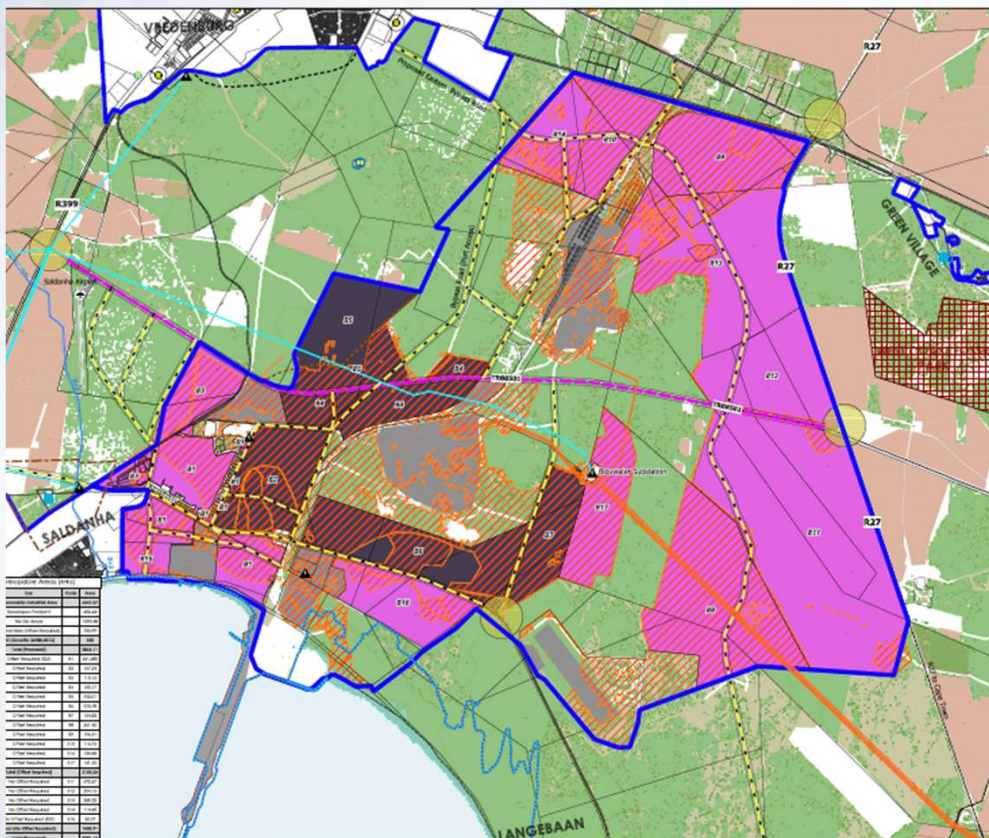


# Municipal Spatial Development Framework - Municipal Spatial Vision



*City of Excellence and Opportunity on the "Weskus"*

# Municipal Spatial Development Framework



- Besaansklop Industrial Development Area

Developable Areas (±Ha)		
Use	Code	Area
Besaansklop Industrial Area		6447.27
Developed Footprint		686.64
No Go Areas		1393.48
Remainders (Offset Required)		785.99
IDZ (Gazette 36988,2013)		330
<b>Total (Proposed)</b>		<b>2866.11</b>

THANK YOU



SALDANHA BAAI  
BAY  
MUNISIPALITEIT | MUNICIPALITY | UMASIPALA

[www.sbm.gov.za](http://www.sbm.gov.za)

